

PART OF THE S.W.1/4, OF SECTION 36, T.7N., R.1E., S.L.B. & M.  
**MARY'S ACRES SUBDIVISION**

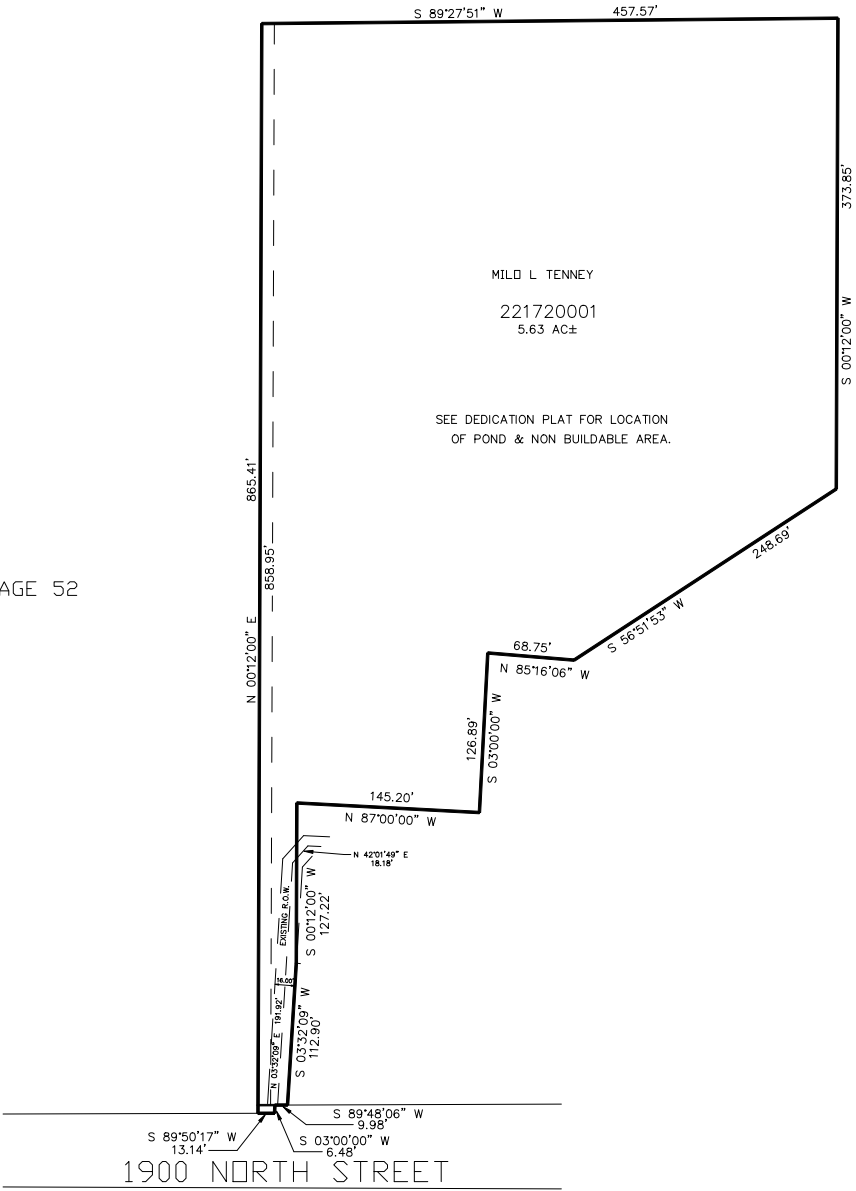
IN WEBER COUNTY  
SCALE 1" = 80'

TAXING UNIT: 28

SEE PAGE 52

SEE PAGE 52

SEE PAGE 52



SEE PAGE 52

FOR COMPLETE ENG DATA SEE  
ORIGINAL DEDICATION PLAT IN  
BOOK 51, PAGE 64 OF RECORDS.